



SAWCAN

SAWCAN guide for researchers

We acknowledge the Traditional Custodians of the Eyre and Far West Coast of South Australia where we live, learn and work.

We pay respect to Elders past and present and to future leaders. We acknowledge the diversity of community and their ongoing connection to land, skies and waters.

Standing united as Aboriginal and non-Aboriginal people, we work alongside Aboriginal communities. We promote respect, understanding and positive change for the benefit of all.



The Aboriginal Community Controlled Health Organisations (ACCHOs) in the Eyre and Far West Coast of South Australia and their network organisation, South Australian West Coast ACCHO Network (SAWCAN), welcome research to improve the health and wellbeing of Aboriginal people.

We understand the importance of research and partner successfully with governments, universities, organisations and researchers on many studies and projects.

What is this document for?

This document helps researchers and organisations wishing to conduct research to better understand and improve the health and wellbeing of Aboriginal people and communities in the Eyre and Far West Coast of South Australia.

It outlines the principles and processes researchers must follow to gain access to the support of one or more of the five local Aboriginal Community Controlled Health Organisations (ACCHOs) and the communities they serve.

SAWCAN manages all research applications and partnerships on behalf of local ACCHOs

The ACCHOs have appointed their network organisation – SAWCAN to manage all research requests and research partnerships on their behalf. This centralised system benefits researchers and community and reduces pressure on local ACCHOs.

Researchers should approach SAWCAN rather than ACCHOs or other local community organisations with health and wellbeing research proposals or requests.

Who is SAWCAN?

The South Australian West Coast ACCHO Network (SAWCAN) is a partnership between five Aboriginal Community Controlled Health Organisations (ACCHOs).

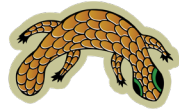
- Nunyara Aboriginal Health Service in Whyalla
- Port Lincoln Aboriginal Health Service
- Yadu Health Aboriginal Corporation in Ceduna
- Tullawon Health Service in Yalata
- Oak Valley Health Service

The ACCHOs established SAWCAN in 2020 to formalise decades of collaboration. SAWCAN helps the ACCHOs to be stronger together to improve the lives of our people. We bring skills and knowledge together and give the ACCHOs a unified and region-focussed voice.

SAWCAN's model is different from many other Aboriginal networks. It works for and with its ACCHOs. SAWCAN provides training, research and program coordination, and advocacy to help its ACCHOs to serve community. It doesn't provide direct services to community members or compete with or duplicate the work of others.



Whyalla



PORT LINCOLN ABORIGINAL
HEALTH SERVICE LTD.

Port Lincoln



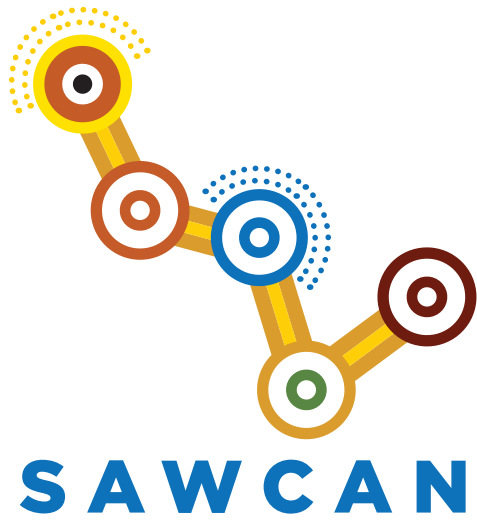
Ceduna



Yalata



Oak Valley



-  NUNYARA ABORIGINAL HEALTH SERVICE INC
-  PORT LINCOLN ABORIGINAL HEALTH SERVICE LTD
-  YADU HEALTH ABORIGINAL CORPORATION
-  TULLAWON HEALTH SERVICE INC
-  OAK VALLEY (MARALINGA ABORIGINAL CORPORATION)



SAWCAN PARTNER LOCATIONS

Our region

Our ACCHOs provide comprehensive primary health care to approximately 5,500 Aboriginal people in the Eyre and Far West Coast region of South Australia. This vast 230,000 square kilometre area stretches from Whyalla in the east to the border with Western Australia. Towns include Whyalla, Port Lincoln, Ceduna, Yalata and Oak Valley.

Vision

Research is driven and owned by our communities and organisations, with Aboriginal people leading the way in defining priorities, guiding processes and owning the data and outcomes. SAWCAN is committed to transforming the way Aboriginal health and wellbeing research is conducted in our region and with our Partner Organisations.

Benefits to researchers of working with SAWCAN

SAWCAN has the skills, expertise and knowledge to help make your research more efficient, effective and beneficial (translational).

SAWCAN understands the local communities and their priority health and wellbeing needs. We can help researchers to:

- ✓ design culturally appropriate research
- ✓ take a region-wide approach
- ✓ access ACCHO facilities
- ✓ assist with analysis and evaluation of results

Research Coordinator Role and responsibilities

Supports collaboration process from steps 1 to 10 – you will receive correspondence from SAWCAN regarding your application's progress.

- ✓ Engaging with ACCHOs
- ✓ Improve the way that health research is undertaken across our communities
- ✓ Support ACCHO staff with training and knowledge
- ✓ Increase awareness of SAWCAN Research Framework (internal and external)
- ✓ Key contact for establishing a collaboration agreement between SAWCAN ACCHOs and researchers
- ✓ Provide support to ACCHOs as required during collaboration with researchers

Our Research Framework



Objective

Support delivery of culturally respectful research to improve the health and wellbeing of Aboriginal people across the Eyre Peninsula and Far West Coast of South Australia.

How research moves through this framework

Knowing

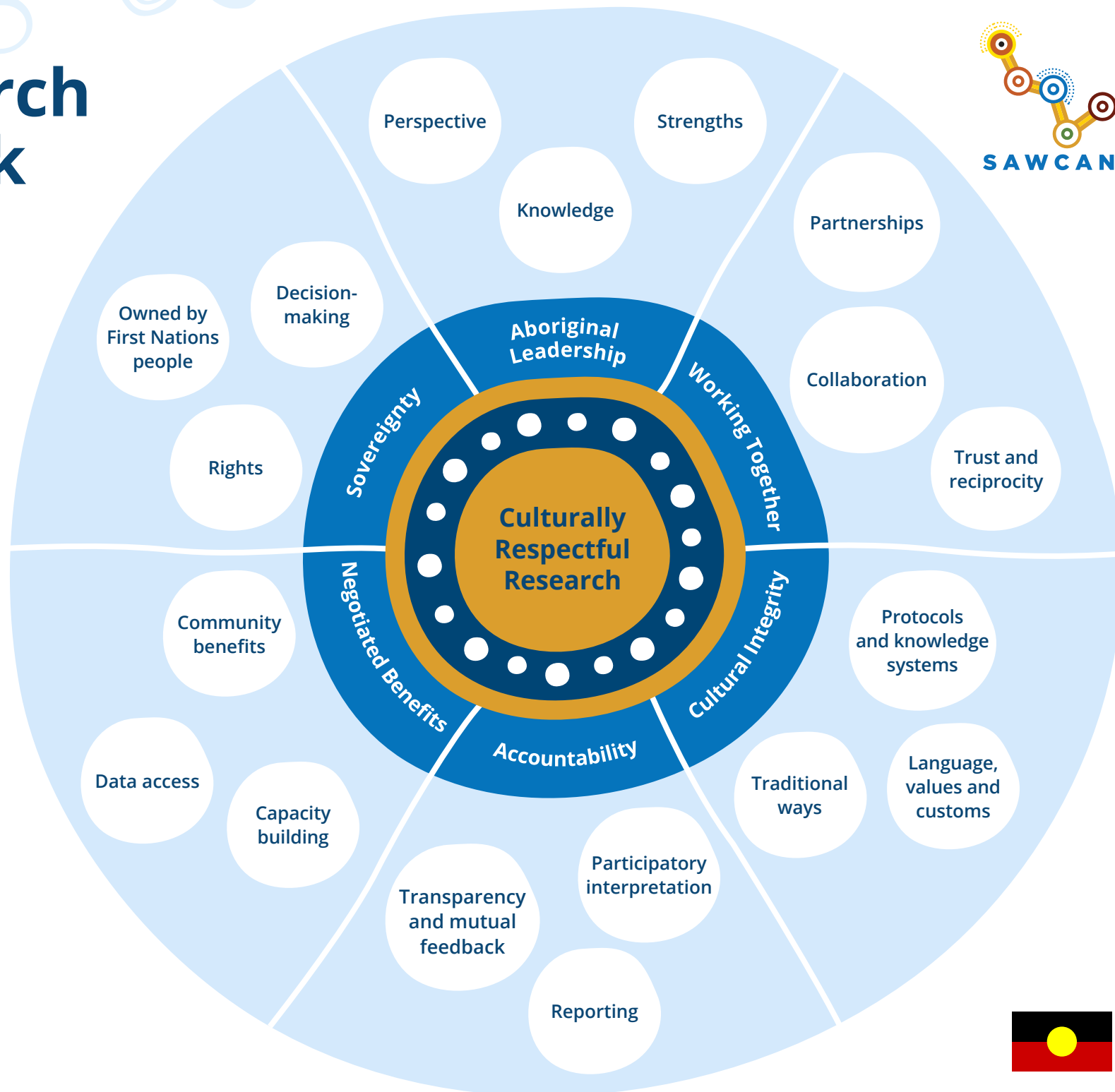
- ✓ Ideas and learning
- ✓ Co-design
- ✓ Ethics

Being

- ✓ Formal application
- ✓ Review and approval
- ✓ Formalise

Doing

- ✓ Co-production
- ✓ Monitoring
- ✓ Reporting



Principles

Our culturally responsive research principles have been developed for and by Aboriginal people and ACCHOs. They are grounded in Aboriginal ways of knowing, being and doing to ensure research aligns with community priorities, respects sovereignty and leads to meaningful outcomes.

Priorities

ACCHOs will determine if research projects align with their research priorities once they have reviewed the research application briefing from the Research Coordinator. No ACCHO has pre-set research priorities as we encourage all projects to show interest. We do not want to miss an opportunity to collaborate as a result of pre-determined priorities.

ACCHO leads collaboration from steps 6 to 10.

S Sovereignty

Research is led, owned and governed by the local Aboriginal people. It ensures their right to make decisions about what research is conducted, how it is conducted and how outcomes are shared.

A Aboriginal leadership

Aboriginal voices are central at all levels – in design, implementation, evaluation, interpretation and dissemination. This leadership ensures research reflects community knowledge, strengths and perspectives.

W Working together

Collaboration is key. Researchers work in genuine partnership with communities, building trust and reciprocity over time.

C Cultural integrity

Research must uphold and respect cultural protocols, knowledge systems and values. This includes being mindful of language, customs and traditional ways of sharing information.

A Accountability

Researchers are accountable to the Aboriginal communities they are researching. Transparent processes, regular reporting, participatory interpretation and mutual feedback are essential.

N Negotiated benefits

Researchers must design and carry out research to provide tangible community benefits that ACCHOs and communities pre-determine. Benefits may include capacity building, access to data or direct improvements in services or wellbeing.

Collaboration responsibilities

- 1 Ownership and Empowerment** – Our ACCHOs / ACCHOs Board and Community members will hold ownership and drive research and data activities.
- 2 Inclusive Engagement** – ACCHOs and Community members will be involved at every stage of research and in data processes.
- 3 Knowledge and Respect** – Our ACCHOs and Community members will be acknowledged and respected for their knowledge and wisdom.
- 4 Capacity Building** – Researchers will work to build research and data skills within the Community.
- 5 Relationship Building** – Researchers will establish trusting relationships and rapport with ACCHOs and Community members.
- 6 Transparent Communication** – Researchers will provide regular updates to ACCHOs and Community members on project progression.
- 7 Participatory Interpretation** – ACCHOs and Community members will be included in the interpretation and evaluation of programs and projects.
- 8 Our Data, Knowledges and Experiences** – We keep data safe by making sure it is only used with permission and in ways that benefit our community. This includes Cultural Intellectual Property, which means our stories, knowledge and traditions belong to our community and we decide how they are used and shared.

*Cultural awareness certification is mandatory for all Research field members

Research ethics

All projects must have Aboriginal Health Research Ethics Committee (AHREC) approval.

All human research must have approval from a university's Human Research Ethics Committee (HREC).

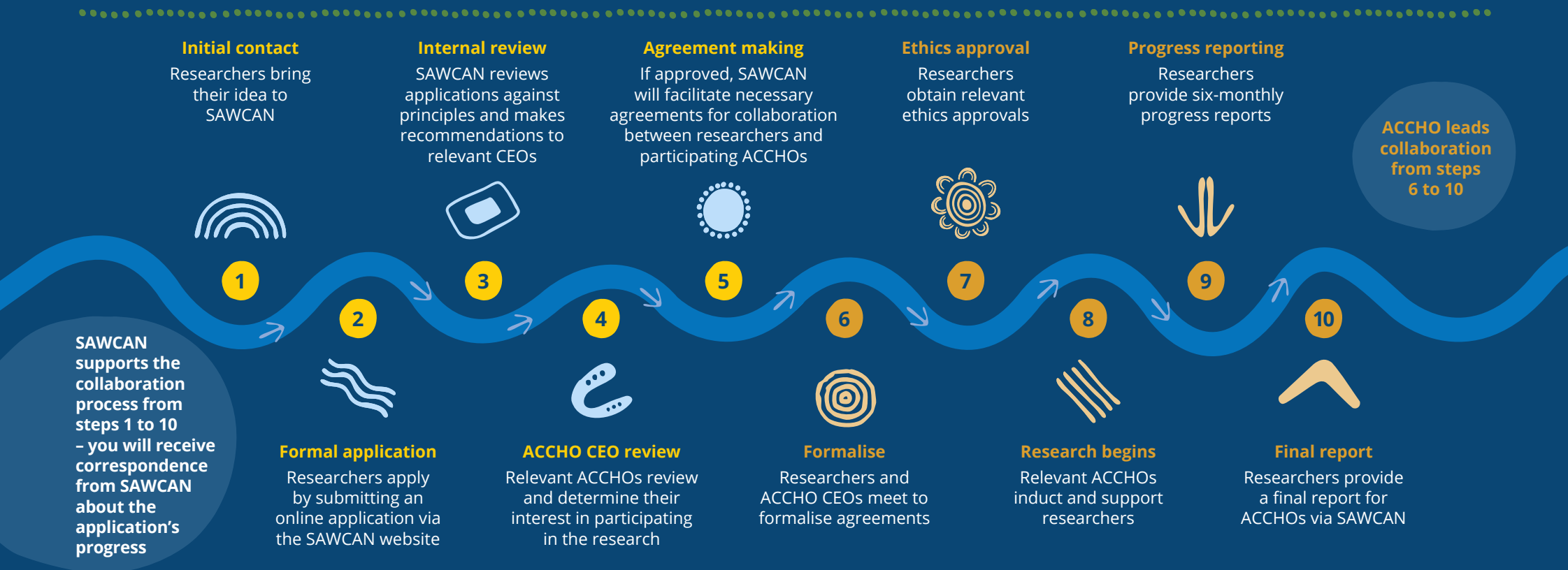
If your project is initiated or conducted by SA Health staff, or by external researchers seeking access to SA Health data or clients, you must have approval from the SA Department for Health and Wellbeing Human Research Ethics Committee (DHW HREC).

Our Research Process



Early engagement is crucial to a more effective research proposal. Researchers will come to SAWCAN with a health and wellbeing research idea or at the beginning of a project. This allows us to support them in designing and facilitating the best possible research.

Researchers who want the assistance of ACCHOs and the participation of the people we serve must apply through SAWCAN.



Vision

Research is driven and owned by our Communities and organisations, with Aboriginal people leading the way in defining priorities, guiding processes and owning the data and outcomes. SAWCAN is committed to transforming the way Aboriginal health and wellbeing research is conducted in our region and with our Partner Organisations.

Objective

Support delivery of culturally respectful research to improve the health and wellbeing of Aboriginal people across the Eyre Peninsula and Far West Coast of South Australia.





Additional information

To submit an application or for more information
about SAWCAN visit sawcan.org.au

For information on health and wellbeing research or to discuss
a research idea, email: research.data@sawcan.org.au



SAWCAN