

SAWCAN

ANNUAL REPORT



SAWCAN

2021 - 2022

South Australian West Coast ACCHO Network (SAWCAN)



SAWCAN officially launched in 2020 as a partnership consortium, marking its inaugural year. This innovative regional collaboration consists of five ACCHOs across the Eyre Peninsula and Far West Coast of South Australia:

- Nunyara Aboriginal Health Service
- Port Lincoln Aboriginal Health Service
- Yadu Health Aboriginal Corporation
- Tullawon Health Service
- Oak Valley Health Service

The SAWCAN consortium work collaboratively to:

- Build capacity within the region to achieve improved health and wellness outcomes for Aboriginal people
- Demonstrate a strengths-based approach to achieving large scale solutions
- Share and co-operate with each other to utilise each other's skills, experience, and specialist knowledge
- Leverage opportunities by advocating as one voice
- Become a central point of contact that provides advice and direction to external parties on issues affecting Aboriginal people in the region
- Act as a point of truth telling and supporting each other

Why are we working together?

SAWCAN started off as an informal collective of five ACCHOs who came together to workshop, grow and learn to address specific regional issues faced by Aboriginal people living across this area.

Our first formal gathering was held in Ceduna in 2018 to discuss the challenges of accessing culturally appropriate disability services and the failure in the roll out of the NDIS. Over the next two years, our services committed to working together to put measures in place to address the vast challenges faced by our communities in accessing the NDIS. Further to this, we also committed to working together across a broad spectrum of challenges faced along the Eyre and Far West Coast of SA.

In mid-2020, SAWCAN were successful in winning their first project grant, the Aboriginal disAbility Alliance. Leveraging off this funding, SAWCAN has been able to employ a human resource to not only lead the Aboriginal disAbility Alliance project, but also to build SAWCAN as its own entity.

Our founding Directors

The SAWCAN Directors is comprised of the CEOs of each of the Partner organisations.



Cindy Zbierski, CEO of Nunyara
Aboriginal Health Service.
Inaugural Chairperson of
SAWCAN



Carolyn Miller, CEO of Port
Lincoln Aboriginal Health Service.
Director of SAWCAN



Joanne Badke, CEO of Tullawon
Health Service.
Director of SAWCAN

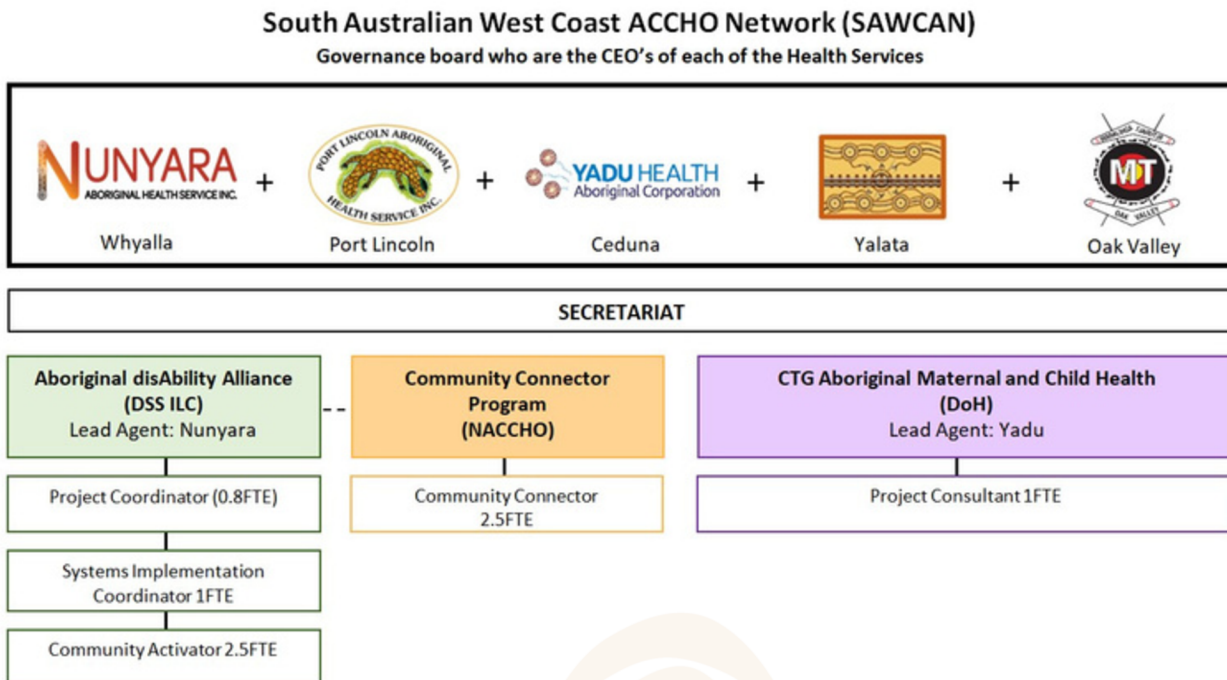


Sharon Yendall, General
Manager of Oak Valley
Maralinga.
Director of SAWCAN



Zell Dodd, CEO of Yadu
Health Aboriginal
Corporation.
Director of SAWCAN

The governance structure:



Some of our key achievements this year include:

- Successful in receiving a regional grant through the Department of Social Services, under the Information, Linkages and Capacity Building program to develop and implement the Aboriginal disAbility Alliance Project
- Employment of a Project lead and Systems Coordinator who work across the region
- Successful in receiving an additional grant through NACCHO under the Community Connector program.
- Four face-to-face regional meetings held
- Agreed commitment to continue growing and developing localized solutions to challenges experienced by our communities.
- National representation on two new Closing the Gap working groups through the Coalition of Peaks (1. Disability Sector Strengthening Working Group; 2. National Aboriginal and Torres Strait Islander Human Services Workforce Framework working group). Our involvement in these working groups give our regions a voice in national systemic change.
- Multiple opportunities to share and learn off one another and sharing of resources.
- SAWCAN branding development

Future focus areas

We are currently in the early phases of undertaking a coordinated approach to the States' investment in Aboriginal Maternal and Child Health. We aim to engage a project consultant to undertake a scoping and systems mapping exercise across our regions to identify internal and external system improvements. Two other key areas of focus include mental health and workforce.

Aboriginal disAbility Alliance project

The Aboriginal disAbility Alliance project is a regional program delivered under the South Australian West Coast ACCHO Network (SAWCAN). Under this partnership arrangement we are tasked with co-designing a NDIS capacity-building project with local Aboriginal people living with a disability and their siblings/families who live across the Eyre Peninsula and far West Coast of South Australia. The project has been funded for a period of two-years via an NDIS Information Linkages and Capacity Building (ILC) grant and recognizes a prior ILC grant awarded to Port Lincoln Aboriginal Health Service. Our project aims to address the many barriers that Aboriginal people within the five regions have encountered with NDIS since 2013. These barriers and lack of capacity (on the part of both consumers/participants and providers) have led to some of the lowest levels of NDIS utilisation in the country. We are taking a multi-pronged approach to project implementation which focusses on four core objectives:

1. Improved understanding of our services and regions
2. Increase community understanding and awareness of the NDIS
3. Improve access to the NDIS for Aboriginal people, their families, and carers
4. Creating sustainable, culturally appropriate disability services (Future proofing the project)

Leading this project across the region is Polly Paerata, whilst training and NDIS knowledge translation is provided by Shellander Champion.

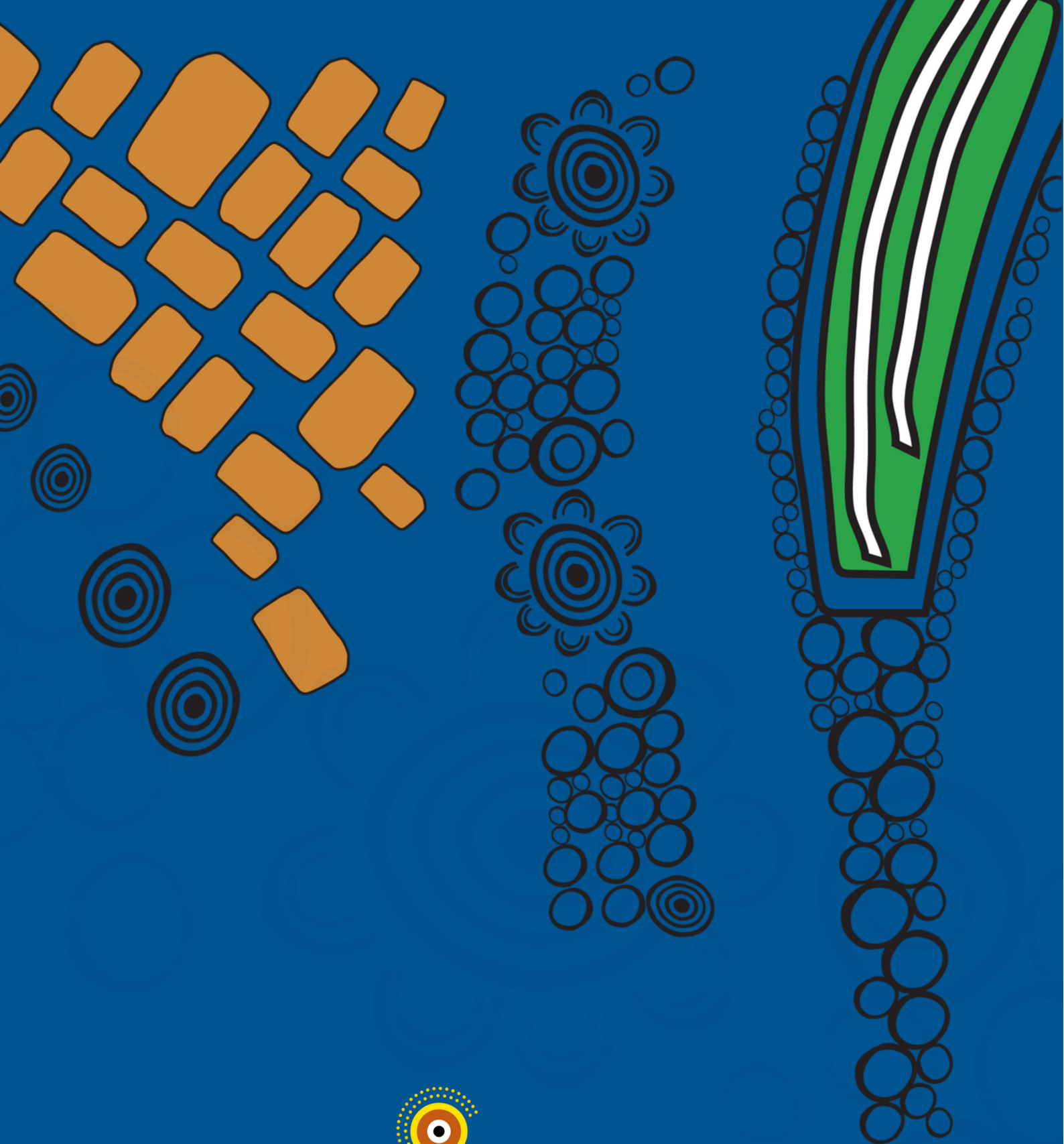
This year, as a region we have:

- Met face-to-face three times
- Had seven regional Teams meetings
- Participated in two government consultation sessions around NDIS changes
- Delivered eight training sessions covering mental health, early childhood, complex clients, understanding NDIS plans, pre-planning, planning and plan implementation.
- Had a total of 50 participants across the eight training sessions



Back row left to right: Kate Warren, Rachel Ware, Peter Shepherd, Teresa Szumski, Jamilah Lovibond, Polly Paerata.
Front row left to right: Shellander Champion, Deslyn Dodd.

Under this project, Nunyara have employed a full time NDIS worker who provide support to Aboriginal people living with a disability, their families and carers in access the NDIS and connecting them with supports in the community. Our workforce also work in collaboration with their counterparts employed at PLAHS, Yadu, Tullawon and Oak Valley. This facilitates the opportunity for shared learnings, but also allows our organisations to create a consistent approach.



SAWCAN