

REASONABLE  
AND NECESSARY  
MEANS



The support is **related to your disability**



**Be more independent**, for example, make changes to your house (rails, ramp etc.)

IT HELPS YOU TO PAY  
FOR SUPPORTS THAT  
HELP YOU TO



It is written in your **NDIS Plan**

WHAT CAN  
I SPEND  
MY NDIS  
FUNDS ON?

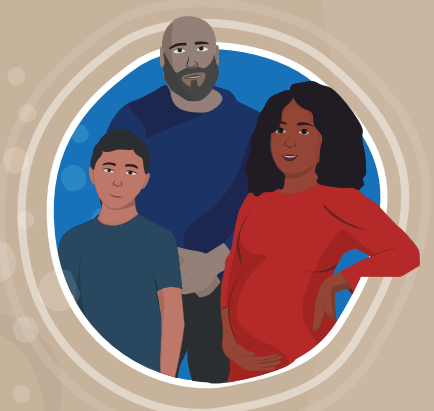
The NDIS will only fund **'reasonable and necessary'** supports that meet your needs and goals in your NDIS Plan.



**Get equipment and aids you need**, for example, a wheelchair, a communication device, or changes to your car



It is a **good price**



**Get out in the community**, for example, a support worker who can take you to the footy or a Men's / Women's group



**Evidence-based**  
(tried and tested to work)



**Get services you need**, for example, seeing an Occupational Therapist

THE NDIS DOESN'T FUND



**Things that other government departments pay for** (ie. medication, visiting the GP or Specialist)



**Everyday costs** such as rent, food, bills



**House items** such as a new fridge, lounge or TV

